



Innovations for Smart Manufacturing

Your Automation Solutions that are geared for the future

NORTHERN CALIFORNIA

Join us for an interactive session and discover the key components of a modern automation solution. Explore ways you can make simple steps to modernize your operations and engage a digital enterprise.

Discover the advantages of **partnering with Siemens ...**

- The Siemens Digital Enterprise solution: starts with Totally Integrated Automation (TIA) and TIA Portal— a single engineering framework that seamlessly integrates multiple controllers, distributed I/O, HMI, drives, motion control and data acquisition and reporting
- Our **comprehensive set of support, training, and tools** – including **no-charge code-conversion services** and instructions for converting your current project to the TIA Portal while retaining your naming conventions, allowing familiarity from the start
- Our comprehensive, competitively priced automation portfolio that **easily integrates with your existing system**

Your benefits when embracing modernization

- boost **ROI**, increase **productivity**,
- and enable **transparency**
- Extend & improve safety, and security
- **reduce engineering** time by up to 30%
- Positioned for the future

What automation solutions are positioned for IIOT?

To compete in the global market place, you must find new and innovative ways to reduce time-to-market, enhance flexibility and increase quality, efficiency and security.

Learn how to modernize your operation, while meeting your time and budget needs, to help position you for the future.

Event:
Innovations for Smart Manufacturing

Where/When:
San Francisco, CA - February 7, 2019

DoubleTree by Hilton Berkeley Marina
200 Marina Boulevard
Berkeley, CA 94710

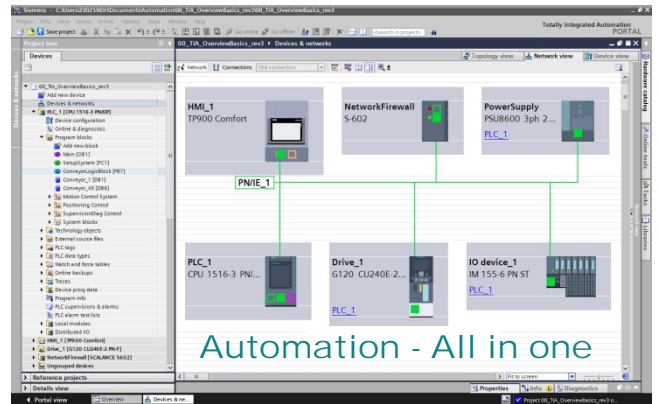
Click to Register:

<http://www.cvent.com/d/6bqrgw>

Overview of key concepts

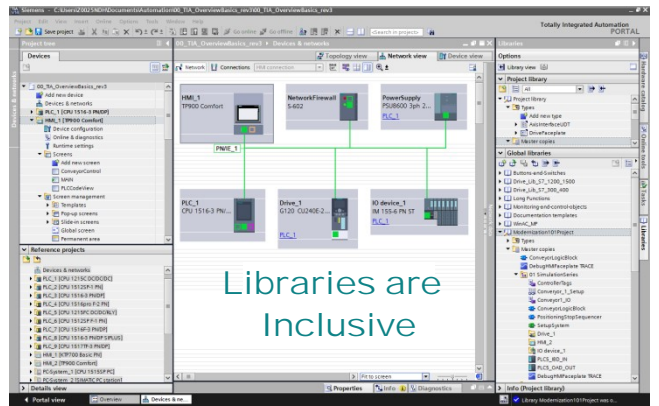
All in One Engineering Framework

- ✓ Flexible, Scalable Automation Solutions fit all applications from basic to highly complex.
- ✓ Intuitive Consistent Usability across all devices.
- ✓ PLC, HMI, Drives, Motion, Safety, Security, Network devices, Power Supplies, and Control Components.
- ✓ How investing in "best-in-class" automation solutions, that are early in their product lifecycles will help you remain competitive by reducing time-to-market, enhancing flexibility, and increasing efficiency



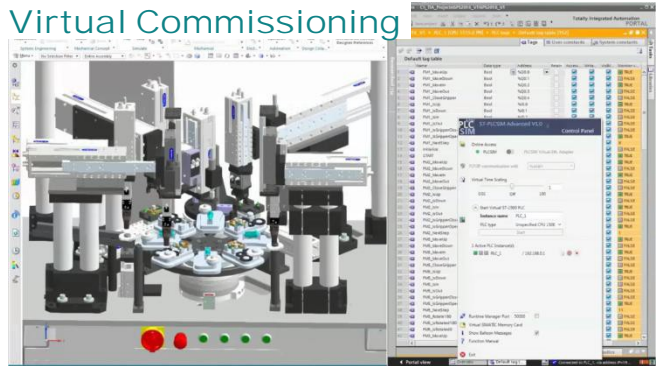
Comprehensive Library Functionality - Inclusive

- ✓ How to began to formalize corporate standards based on a reference project to build new applications and libraries
- ✓ Begin to provide versioned typed objects that are managed outside the automation project to ensure consistently applied across all applications
- ✓ How to use simple reliable tools to auto-generate the automation solution, now and into the future.
- ✓ All Automation Objects can participate within the library concepts, from devices, PLC, HMI, Drives.



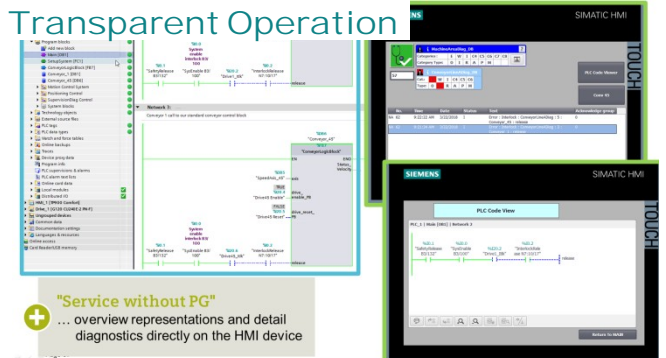
Simulation, and Virtual Commissioning

- ✓ PLC, HMI, and the Motion Axis, Simulation Inclusive
- ✓ Reduce your commissioning and time to market by resolving automation solution in the simulation.
- ✓ Extended your solution to support the digital twin
- ✓ Gain insight into how to embrace concepts of Virtual Commissioning tools allows your digital twin of automation connected to digital twin of your machine, or process will reduce engineering, time to market, and costs of traditional plant floor commissioning



Diagnostics, Maintenance and Service Tools

- ✓ Inclusive System Diagnostics for the complete automation solution, extendable to support PLC Process Alarms provide a view of the code.
- ✓ Configurable Secure HMI to HMI Smart Client allows access to other HMI applications, plus Web-Browser
- ✓ Online/Offline Compare, Modification in RUN, Team Engineering and Multi-User project
- ✓ Trace and Measurements debug tools that are captured online within devices



"Service without PG"
 ... overview representations and detail diagnostics directly on the HMI device